

**Screening with diagnostic quality  
based on ADANI technology**

New ADANI technology provides high quality diagnostics of digital image with resolution up to 3,0 lp/mm and low dose exposure to radiation for the patient

# DRS Thorax MR

**MOBILE**  
**Digital Radiography Room**



Protected by patents in the USA and in Russia

Innovative safe technologies

## Screening with diagnostic quality based on ADANI technology

New ADANI technology provides high quality diagnostics of digital image with resolution up to 3,0 lp/mm and low dose exposure to radiation for the patient

# DRS Thorax MR

## MOBILE Digital Radiography Room

Mobile digital radiography room, incorporating DRS Thorax in transportable version.

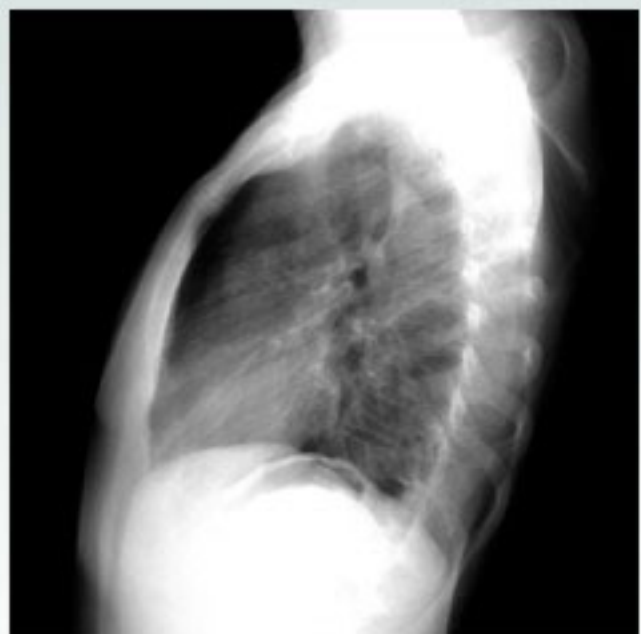
This model can be used for mass X-ray screening of various population groups for early diagnostics of tuberculosis, oncological and other diseases of chest organs:

- in rural areas
- at enterprises
- in military units
- in refugee camps
- in penitentiaries

ADANI has developed innovative two-dimension X-ray image scanning technology, utilizing the method of scanning by extremely narrow fan-shaped beam with geometrical projection zoom, which is original and protected by patents.

### Benefits:

- excellent image quality
- low radiation dose
- high throughput
- single-phase power supply (220 V +/- 10%)
- high resistance to transport overloads and vibrations
- safe conditions of operation and comfort for medical personnel and patients due to the convenient design and use of modern finishing materials
- excellent system of life support utilizing modern air conditioning systems, lighting, heating and water supply
- excellent isothermal characteristics of the room, suitable for various climatic conditions
- high level of X-ray protection: the level of radiation around the X-ray unit, at the operator's workplace and in the cloakroom does not exceed the natural radiation background.



## Layout



### X-ray examination room

1. X-ray tube
2. Collimator
3. Deck
4. Detector motion device
5. Detector
6. Sliding lead coated door with X-ray protection glass

### Workroom

7. X-ray generator
8. PC operator's workstation
9. Wardrobe
10. Hand washer stand
11. Control rack

### Cloakroom

12. Double clothing racks with convertible sits
13. Door

### Lobby

14. Entrance door

DRS Thorax may be completed by two types of digital scanning receivers **DSR 2560** and **DSR 1560**.

## Technical characteristics

<b>Max image size</b> .....	410 mm x 410 mm
<b>Image format</b> .....	2560 pixels x 2560 pixels / 1536 pixels x 1536 pixels
<b>Image pixel size</b> .....	160 $\mu$ m / 266 $\mu$ m
<b>Spatial resolution, not worse</b> .....	3,0 lp/mm / 2,0 lp/mm
<b>Contrast resolution, not worse</b> .....	1,2 %
<b>Time</b>	
● effective exposure .....	1 - 2 ms
● scanning .....	2,8 s

## Mobile X-Ray room on minibus IVECO

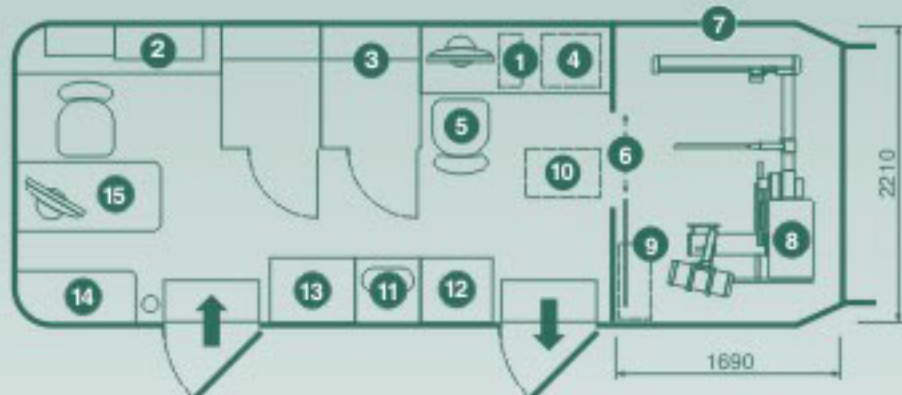


ADANI designs and manufactures mobile digital X-ray rooms on individual customer's requirements utilizing different models of trucks and minibuses.

X-ray examinations of chest organs can be combined with other kinds of examination and analysis.

1. UPS - 1,5 kVA
2. Power supply
3. Dressing cabinet
4. X-ray generator
5. Operator's workstation
6. Sliding door
7. X-ray lead shield
8. DRS Thorax
9. Control Rack
10. Air conditioner
11. Hand washer stand
12. Small refrigerator
13. Cloak room
14. Waiting sit
15. Patient's data workstation

### Layout



## ADANI

166, Rokossovsky Avenue  
Minsk 220101 Belarus

Tel. + 375 17 214 58 46  
+ 375 17 214 58 48

Fax: + 375 17 248 45 66

E-mail: [info@adani.by](mailto:info@adani.by)

Web: [www.adani.by](http://www.adani.by)



© 2005 ADANI

All rights are reserved. Full or partial reproduction without written consent of the copyright holder is prohibited. Adani reserves the right to alter the specification or cease equipment manufacture at any time without prior notice or obligation and is not responsible for any consequence arising from the use of this information materials.

MR. EN. 1105